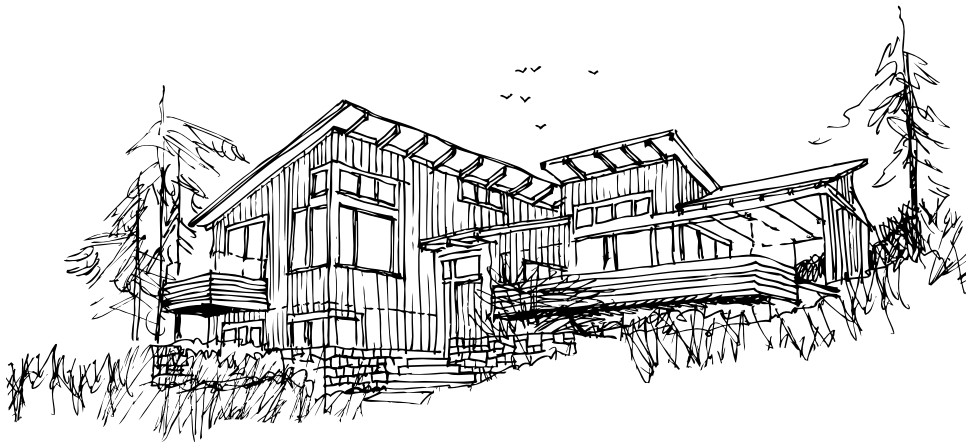


JOHN HOLLIFIELD ARCHITECTS



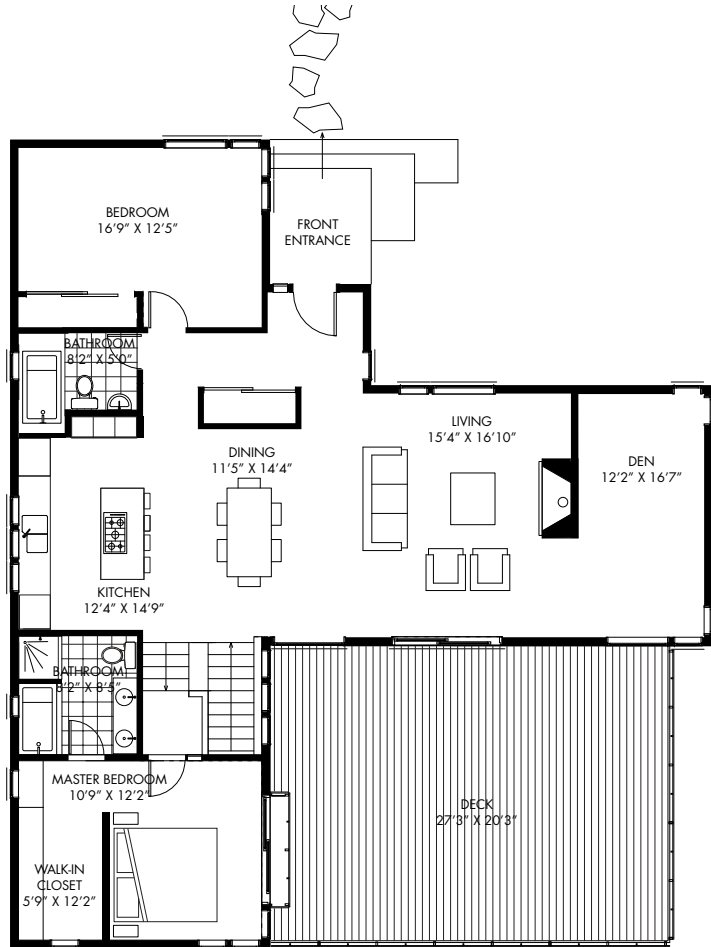
The John Hollifield Home has clear references to the vernacular architecture of The Sunshine Coast, while providing an innovative and contemporary design. The house is centered around the main open planned living space featuring a generous vaulted ceiling and a unique central fireplace open to both living room and den. The master bedroom and ensuite are tucked away from the main living spaces for privacy while taking advantage of the view with large expanses of glass and a private balcony.

“As these houses are going to be family places, I wanted to design a house that would react to the different types of owners, providing the flexibility to suite their needs. The generous slope on the site allowed us to create a wonderful outdoor space directly off the main living space to take advantage of the sunlight and view.”

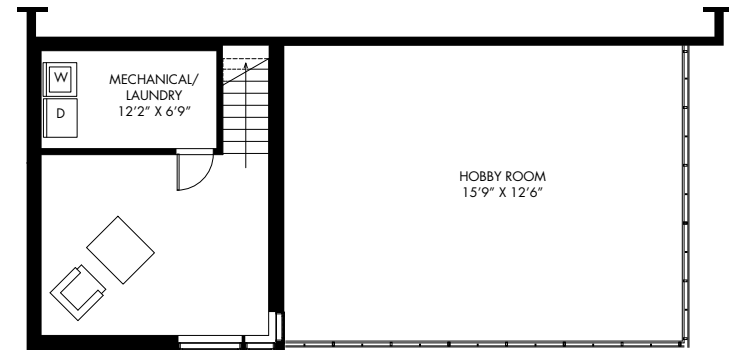
John Hollifield, Hollifield Architect

JOHN HOLLIFIELD HOUSE

Floorplan (Downhill)



MAIN FLOOR



LOWER FLOOR

1645 sf living main
 585 sf deck main
 390 sf living lower
 440 sf garage detached

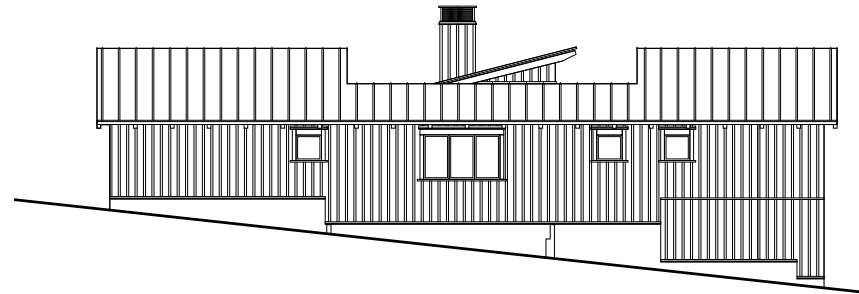
This plan is not to scale and is for purpose information only. Pictures, drawings and digital renderings are for illustrative purpose only and should not be relied upon.

JOHN HOLLIFIELD HOUSE

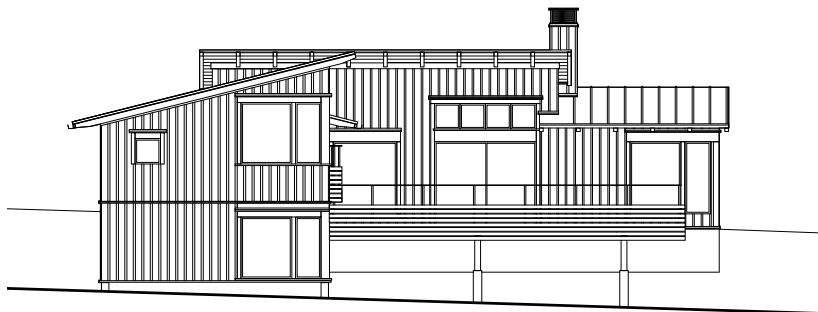
Elevation (Downhill)



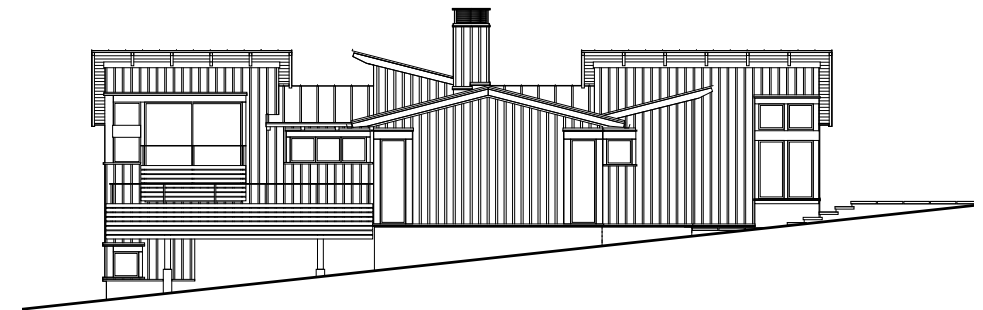
FRONT



SIDE



BACK



SIDE