

RAMSAY WORDEN ARCHITECTS



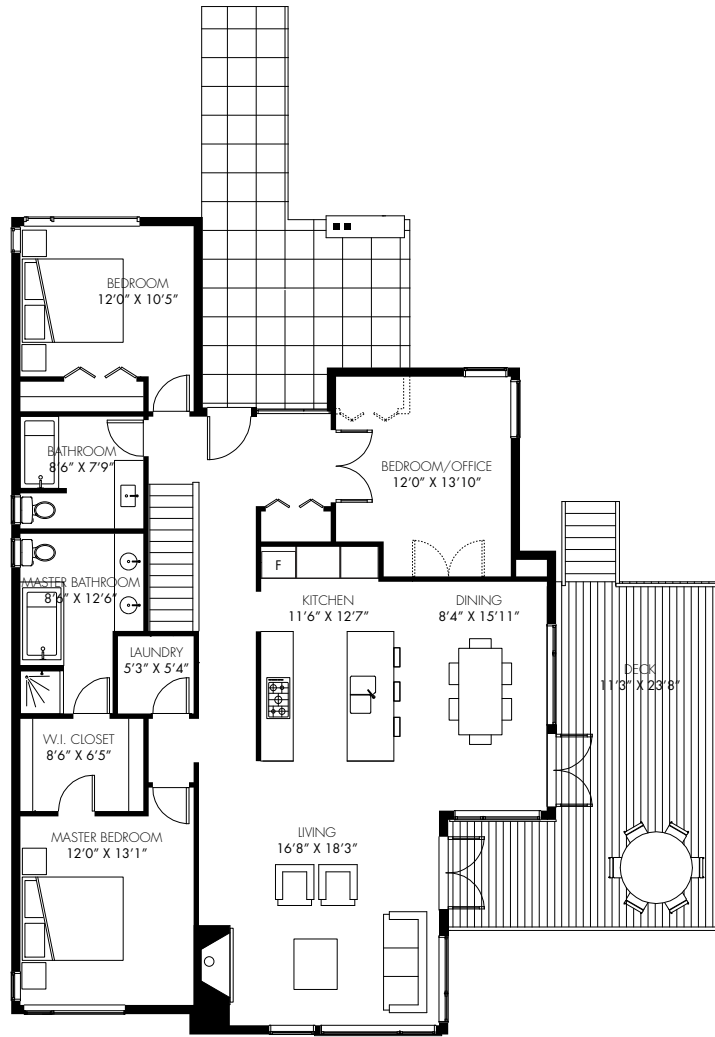
The Ramsay Worden Architects Home features generous amounts of glazing on the main floor harnessing the view and natural amenities that surround while architecturally floating the large angled roof above the home. The main floor interior features a top-lit galleria that runs through the middle of the house separating the main living spaces from the more private bedrooms. Large outdoor decks and patios act as easily accessible amenity spaces to the main living spaces and the master bedroom.

"We love making houses. They're is always an opportunity to experiment and explore how people live. In Davis Bay, we wanted our home to be adaptable, so we designed it in modules. We wanted the interior spaces to flow right outdoors with as little separation as possible. This way, your indoor spaces feel larger than they actually are and your outdoor spaces can become rooms in themselves."

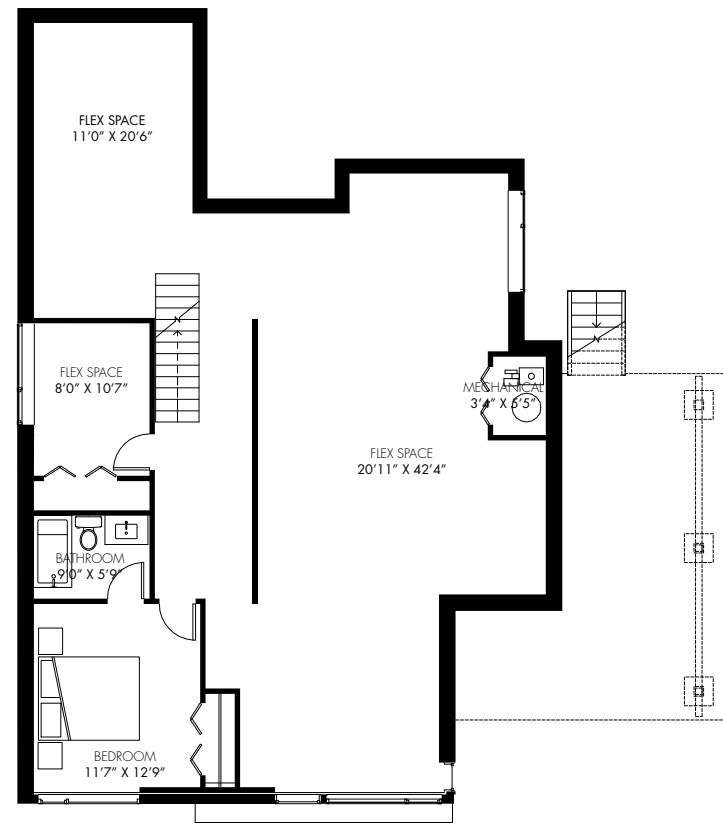
Doug Ramsay, Ramsay Worden Achitects

RAMSAY WORDEN HOUSE

Floorplan (Downhill)



MAIN FLOOR

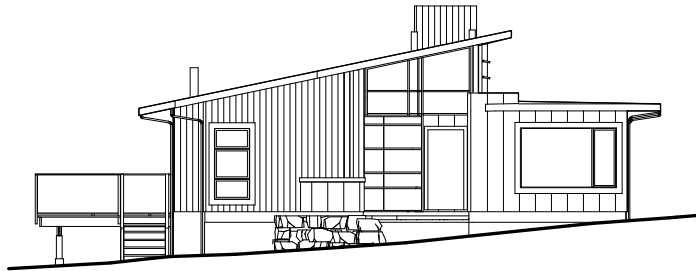


LOWER FLOOR

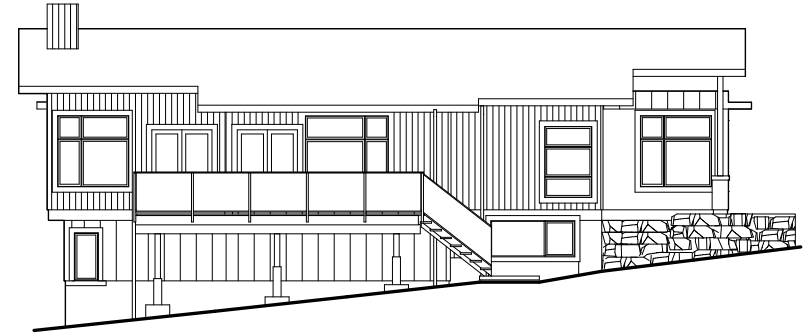
1735 sf living main
 335 sf deck main
 1700 sf living lower
 480 sf garage detached

RAMSAY WORDEN HOUSE

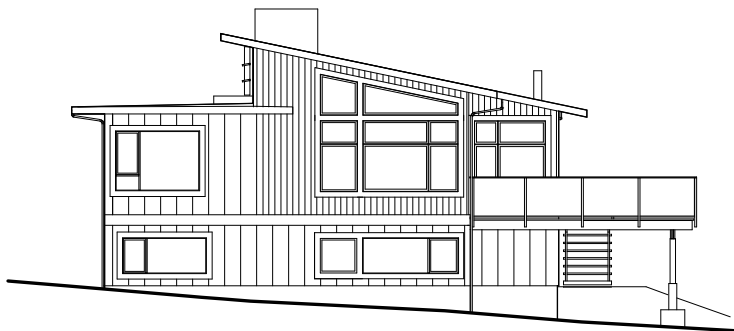
Elevation (Downhill)



FRONT



SIDE



BACK



SIDE