

# RAMSAY WORDEN ARCHITECTS



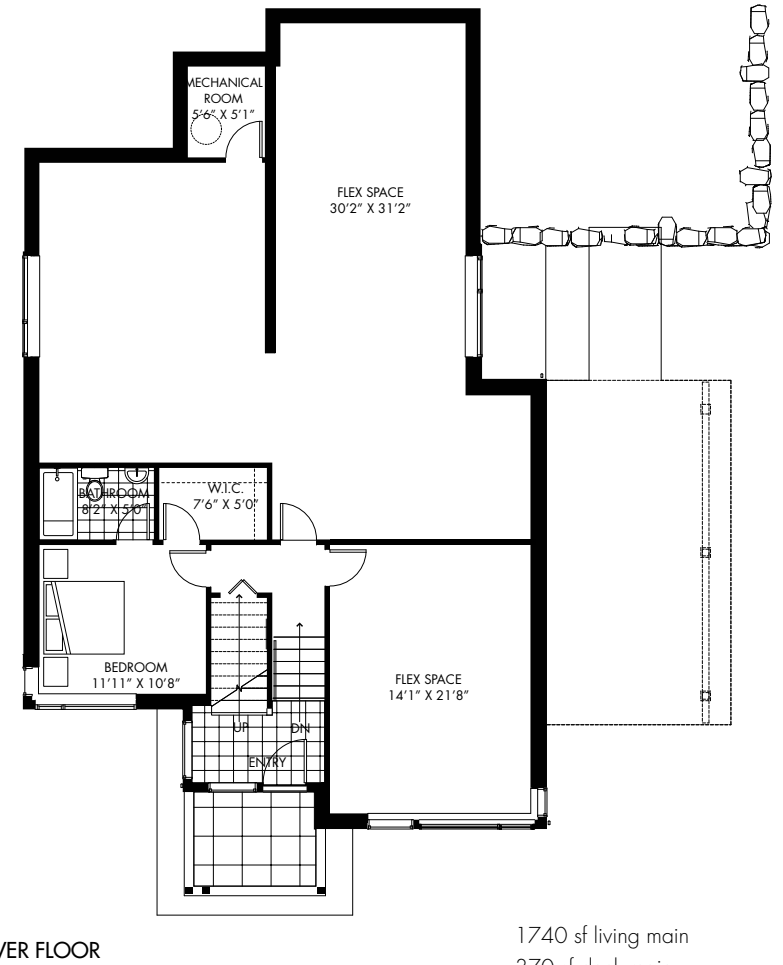
The Ramsay Worden Architects Home features generous amounts of glazing on the main floor harnessing the view and natural amenities that surround while architecturally floating the large angled roof above the home. The main floor interior features a top-lit galleria that runs through the middle of the house separating the main living spaces from the more private bedrooms. Large outdoor decks and patios act as easily accessible amenity spaces to the main living spaces and the master bedroom.

"We love making houses. They're is always an opportunity to experiment and explore how people live. In Davis Bay, we wanted our home to be adaptable, so we designed it in modules. We wanted the interior spaces to flow right outdoors with as little separation as possible. This way, your indoor spaces feel larger than they actually are and your outdoor spaces can become rooms in themselves."

Doug Ramsay, Ramsay Worden Achitects

RAMSAY WORDEN HOUSE

Floorplan (Uphill)



1740 sf living main  
 370 sf deck main  
 1720 sf living lower  
 285 sf patio  
 480 sf garage detached

This plan is not to scale and is for purpose information only. Pictures, drawings and digital renderings are for illustrative purpose only and should not be relied upon.



THE  
HOMES  
OF  
DAVIS BAY

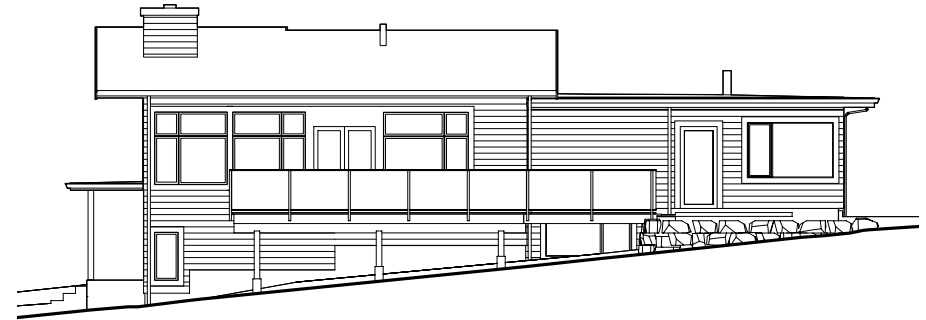
5038 LAUREL AVENUE . DAVIS BAY . SECHLT . BRITISH COLUMBIA . V0N 3A2  
TELEPHONE 604-885-0265 . 1-877-885-0265 . WWW.THEHOMESOFDAVISBAY.COM

## RAMSAY WORDEN HOUSE

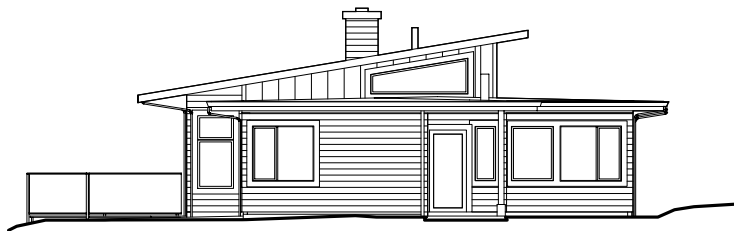
Elevation (Uphill)



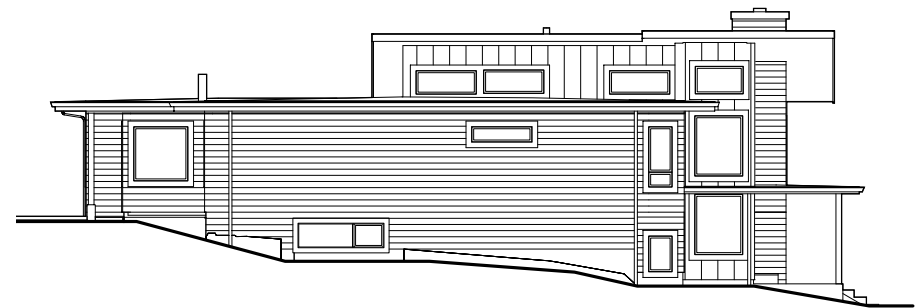
FRONT



SIDE



BACK



SIDE