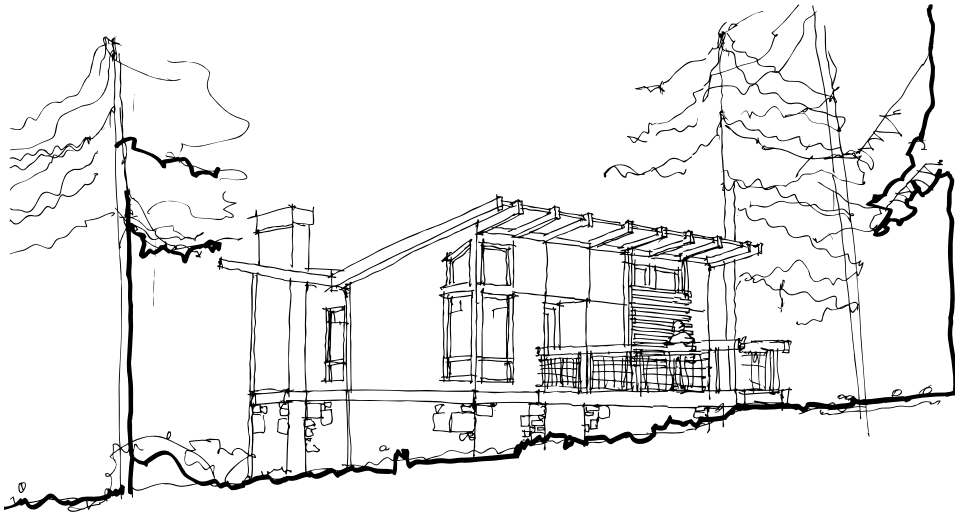


STUART HOWARD ARCHITECTS



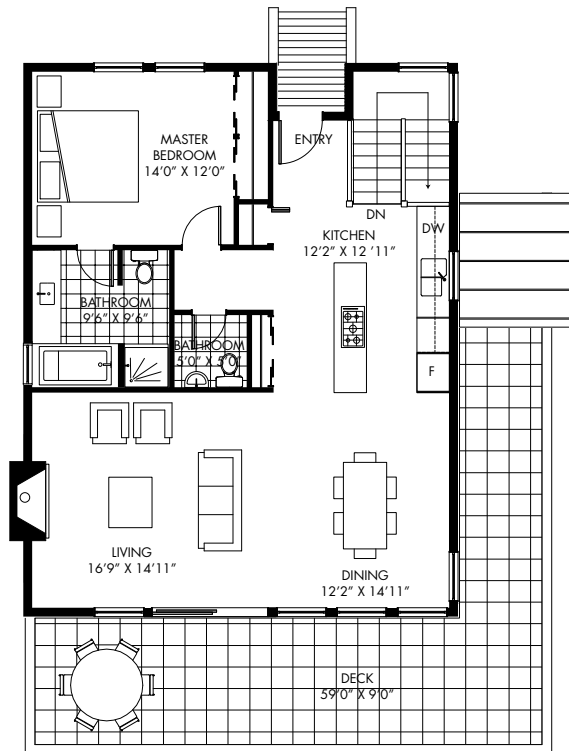
The Stuart Howard Home features a striking inverted slope or “butterfly” roof design. This innovative design results in generous ceiling heights at the front and rear of the house taking advantage of increased natural light and breath-taking views. The main floor of the home benefits from an efficient open plan while maintaining privacy for the master bedroom and en-suite. The living and dining spaces have direct access to the enormous outdoor patio encouraging a seamless flow between indoors and outdoors.

“This is a great site for housing. It features equally spectacular views on the ocean and the mountain side, so we’ve opened up the house to views both uphill and downhill – that’s where the idea of the upwardly sloping roof came from. The floor plan is open; you know what’s going on as you come in through the door. Openness makes the space adaptable; you can move furniture around and it’ll be fine.”

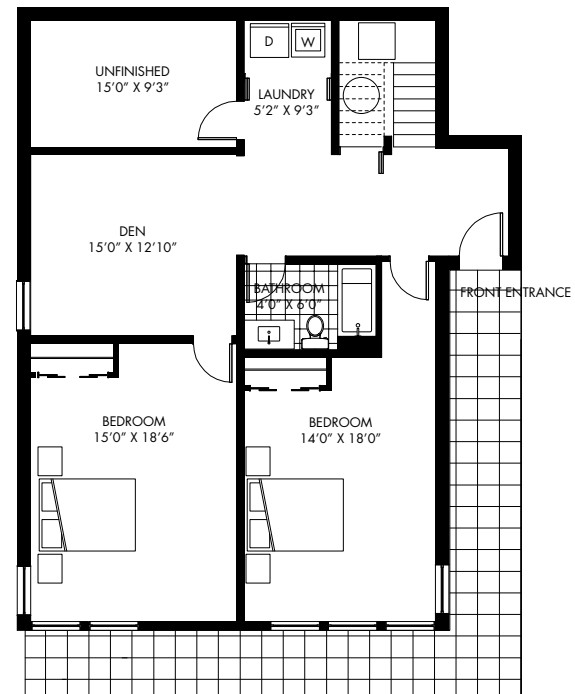
Stuart Howard, Stuart Howard Architects

STUART HOWARD HOUSE

Floorplan (Uphill)



MAIN FLOOR



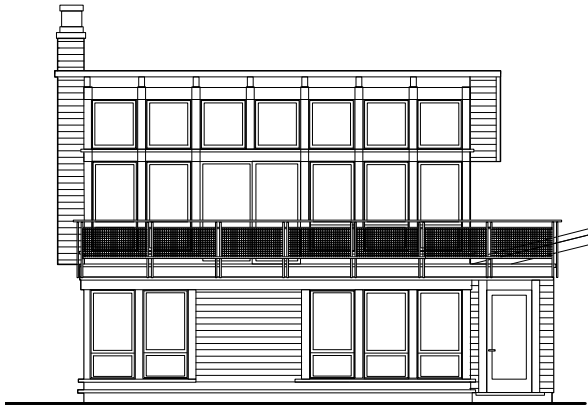
LOWER FLOOR

1165 sf living main
 490 sf deck main
 1355 sf living lower
 505 sf garage detached

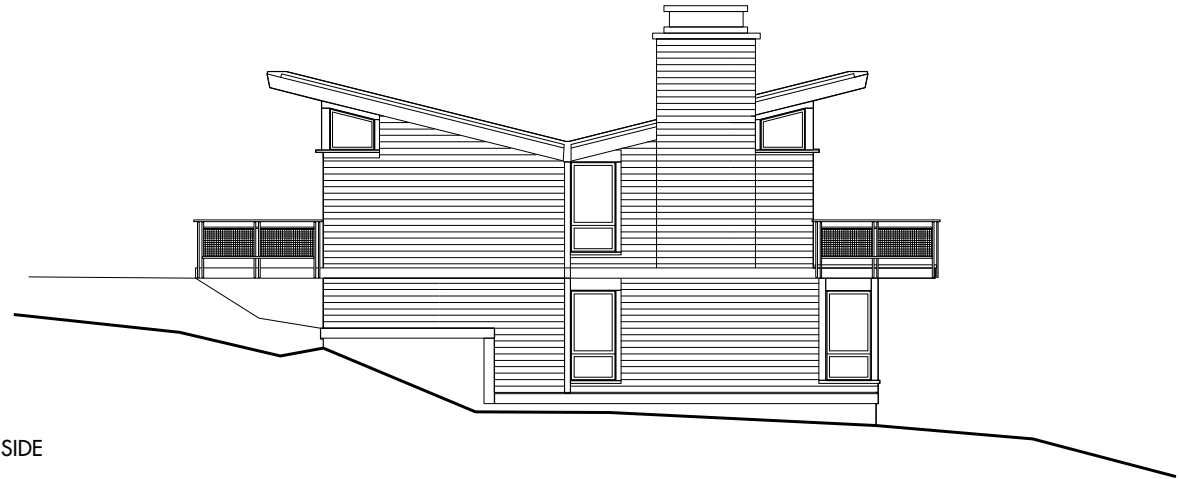


STUART HOWARD HOUSE

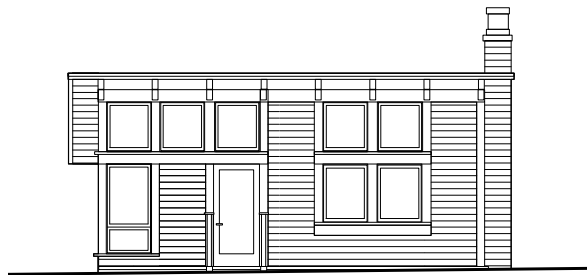
Elevation (Uphill)



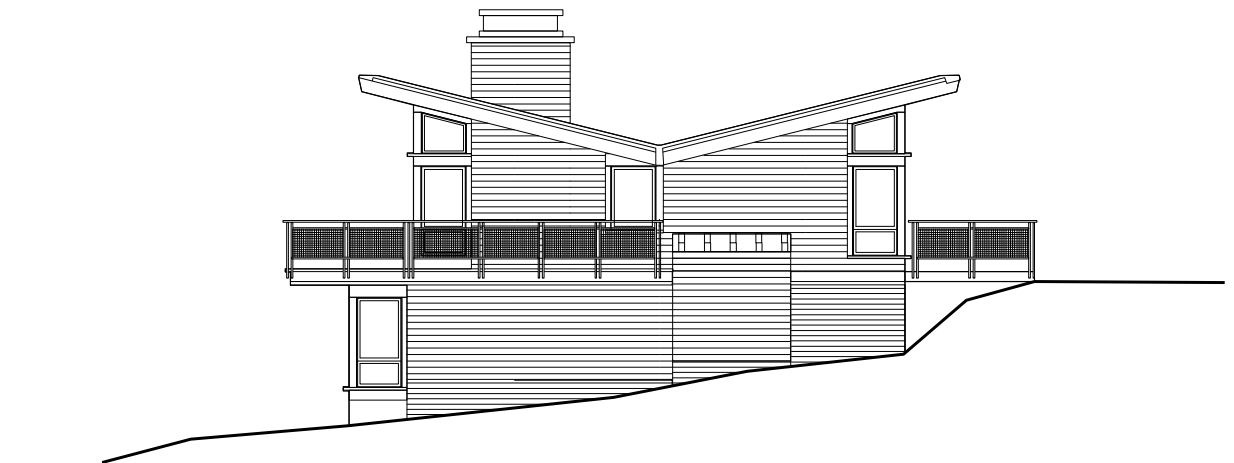
FRONT



SIDE



BACK



SIDE